



## How to watch your CatheDownloads Zune® Software on your Computer

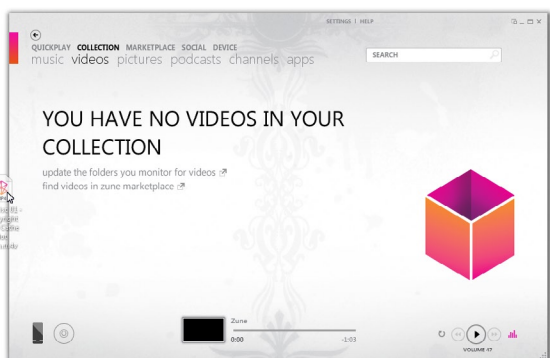
Please note that these instructions assume that you have already downloaded your videos to your computer. If you need guidance on how to accomplish this, please visit our help page at <http://cathedownloads.com/tutorials/>.

**1 Open Zune desktop software.** Start by launching the Zune application on your PC. If you don't have Zune desktop software installed, you can download it at: <http://www.zune.net/en-us/products/software/download/default.htm>. Follow Microsoft's instructions for installing the program.

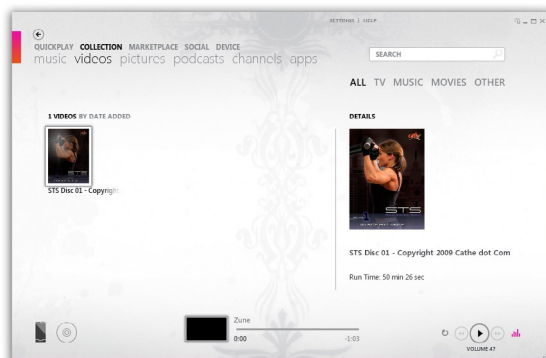


**2 Add your CatheDownloads to Zune desktop software.** Click on **COLLECTION** and then **videos** in the top menu. Once you do this, you should see a list of videos currently in your Zune collection. Drag all of the CatheDownloads you have purchased from their download location into the main window. This will add them to your collection.

**3 View with Zune desktop software on your PC.** To watch your CatheDownload videos on your PC with Zune desktop software, double click the video in your **COLLECTION, videos** panel and it will play within the Zune window. That's it!



Drag the CatheDownloads video files into your Zune videos panel



CatheDownloads video in the Zune desktop software



Viewing your video within Zune desktop software